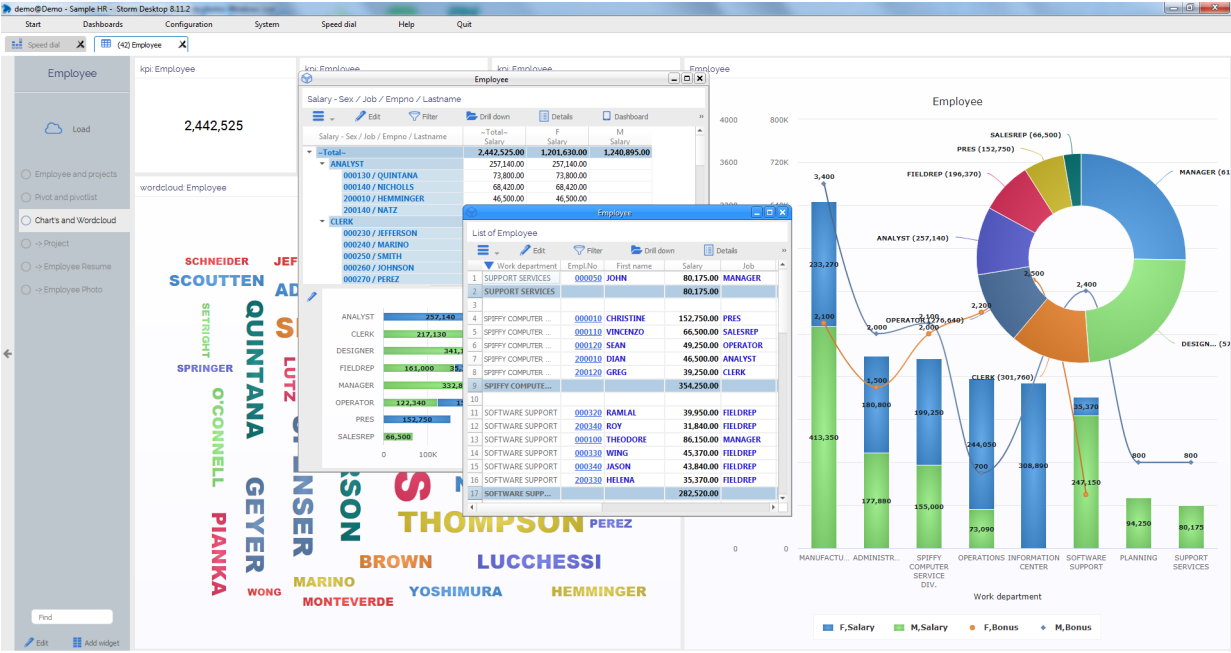




Architecture

v. 8.13.x



Contents

1	Architecture	2
1.1	Architecture with Direct ODBC	2
1.2	Architecture with Websocket	3

1 Architecture

1.1 Architecture with Direct ODBC

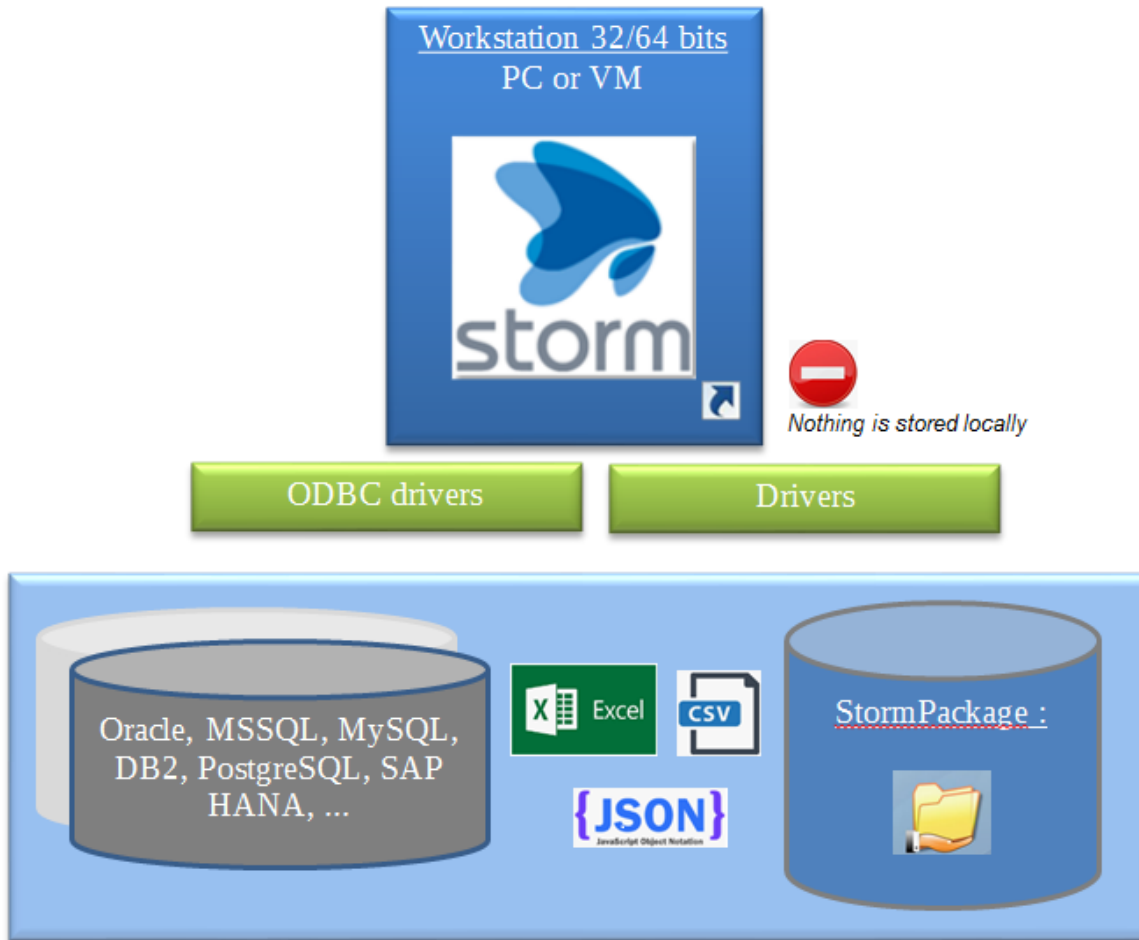


Figure 1.1:

- Storm Package is installed either on a share folder for all the user's or on a local disk for remote user
- ODBC drivers are installed on each PC
- User's sign in with database user and password, or with a Storm user and password

1.2 Architecture with Websocket



Figure 1.2:

- Storm Package is installed either on a shared folder for all the user's or on a local disk for remote user
- Communication between Storm Desktop and Storm Server is made via WebSocket
- Storm Server is a 64 bits multithreads SQL gateway running as Windows service
- ODBC and other data sources are not exposed to the LAN
- User's sign in with database user and password, or with a Storm user and password